

SNMP Administrator

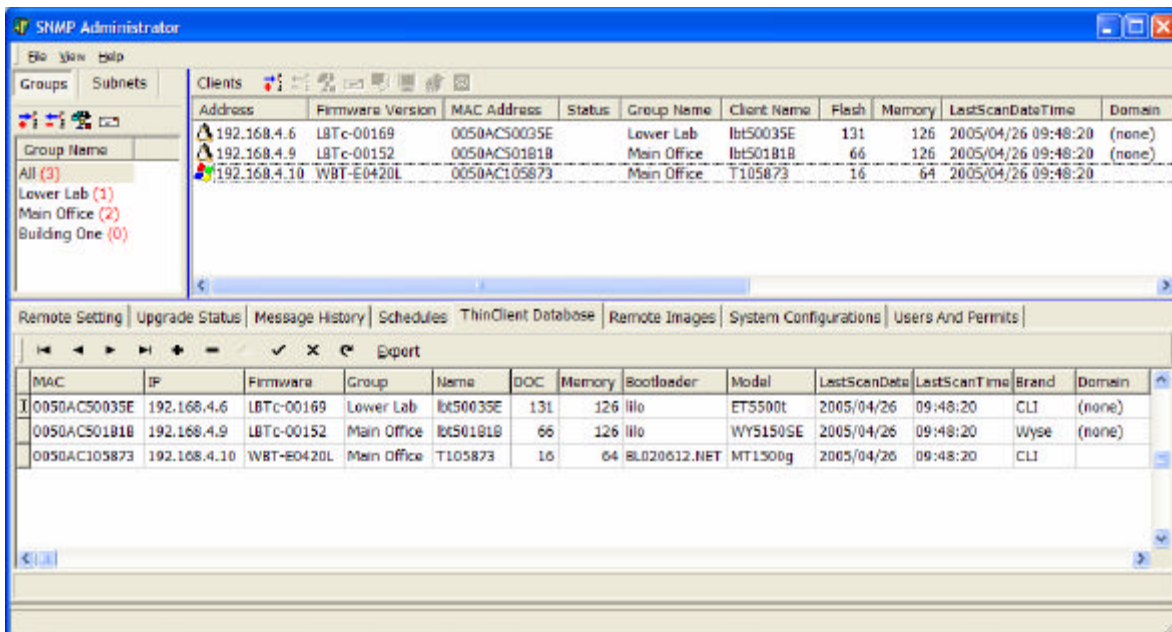
CLI SNMP Administrator management software provides a powerful, yet simple and easy way to manage the complete family of CLI thin clients from a single, centralized management console.

SNMP Administrator is easy to install, learn and use. It uses industry-standard protocols, including SNMP and TCP/IP, to manage CLI thin client devices. And SNMP Administrator has minimal hardware and software requirements, making installation a snap. It also combines unrestricted, no-hassle licensing with unlimited scalability and an intuitive Graphical User Interface (GUI) to get IT managers up and running in just minutes.

SNMP Administrator has comprehensive asset tracking capabilities. Device discovery can automatically detect thin client devices installed on the network, including other SNMP-compatible thin client devices. IT managers can view the current CLI device configuration including firmware version, device location, IP address and memory size, and the integrated database can be used to store or export the information for fast and easy report generation.

SNMP Administrator provides robust, centralized command and control of all CLI thin client devices. Firmware / BIOS updates or configuration changes can be performed in groups or done automatically, eliminating the need for system administrators to manage individual desktops. Remote problem trouble-shooting is greatly simplified, since devices can be shadowed (remotely displayed) with full keyboard and mouse control, rebooted and reset to default state. And all tasks can be scheduled for execution at later times.

CLI SNMP Administrator allows IT managers and system administrators to rapidly deploy, configure and maintain CLI thin client devices. Compatible with the entire CLI thin client product line, SNMP Administrator dramatically reduces deployment and ongoing support costs.



Hardware / Software Compatibility

Hardware compatibility	<ul style="list-style-type: none"> • Pentium II class CPU or greater • Minimum of 128MB RAM • Only 5MB of available hard disk space • Network routers configured to route SNMP packets
Software compatibility	<ul style="list-style-type: none"> • Operating system can be one of: <ul style="list-style-type: none"> ○ Microsoft Windows NT 4.0 Workstation, Server or Terminal Server Edition ○ Microsoft Windows 2000 Professional ○ Microsoft Windows 2000 or 2003 Server (any class) ○ Microsoft Windows XP Professional • SNMP services installed and enabled • SNMP Trap Service NOT running • FTP server located anywhere on network

Features / Functions / Benefits

<p>Easy to learn and use</p>	<ul style="list-style-type: none"> • Intuitive Graphical User Interface (GUI) <ul style="list-style-type: none"> ○ Ability to list and manage thin client devices by groups, subnets, locations, etc. • Simple, no-hassle licensing <ul style="list-style-type: none"> ○ License for use is bundled with every CLI thin client device ○ No need to purchase a separate license for every single device, or "register" every single device ○ Full functionality always included, no additional modules / costs required • Uses industry-standard protocols
<p>Comprehensive asset tracking</p>	<ul style="list-style-type: none"> • Device discovery <ul style="list-style-type: none"> ○ Automatically locate all the CLI devices on the LAN / WAN <ul style="list-style-type: none"> ▪ Discovery works across multiple subnets ▪ No manual configuration of devices required ○ Comprehensive information returned in one window <ul style="list-style-type: none"> ▪ IP address, CLI terminal version number, MAC address, Status, Group Name, Client Name, Flash size, DRAM size, Brand, Model, etc. ▪ "Last Scan" date indicates the last time the terminal was detected by the management software, which can be useful for loss or change/move purposes ○ Discover other brand SNMP-compatible thin clients <ul style="list-style-type: none"> ▪ Wyse • Device database <ul style="list-style-type: none"> ○ Integrated database, no need for a separate database system ○ Build and manage device database ○ Custom-use data fields available for important items such as asset tag information, etc. ○ Database can be exported to CSV format for import into Excel, Access or other programs where the data can be sorted, listed and reports generated ○ "Discover from database" <ul style="list-style-type: none"> ▪ Locate clients on subnet based on local database, for faster discovery
<p>Robust, centralized command and control</p>	<ul style="list-style-type: none"> • Device monitoring / status reporting • Remote control <ul style="list-style-type: none"> ○ Shadow / display remote devices <ul style="list-style-type: none"> ▪ Full keyboard, mouse and video control ▪ For improved help-desk support, remote troubleshooting and diagnostics ○ Remote device reset / reboot <ul style="list-style-type: none"> ▪ Reboot, shutdown, reset to default parameters ▪ Wake powered-off terminals using Wake-On-LAN (WOL) <ul style="list-style-type: none"> • Allows the administrator to "turn on" a terminal which is powered off • Useful for doing updates off-hours or to determine if devices have been removed from the network • Firmware updates <ul style="list-style-type: none"> ○ Firmware modifications <ul style="list-style-type: none"> ▪ Bug fixes, service packs, O/S upgrades, BIOS upgrades, etc. ○ Flash update any single CLI device or group of CLI devices on the network or subnet <ul style="list-style-type: none"> ▪ Via menu or drag-and-drop ○ View upgrade status for each individual unit ○ Firmware copying / duplicating / cloning ○ Push-based and pull-based update <ul style="list-style-type: none"> ▪ Build custom device image for DHCP auto-configuration <ul style="list-style-type: none"> • Updates can also be written via FTP • Device configuration <ul style="list-style-type: none"> ○ Setup operating parameters ○ Create a custom configuration for one or multiple CLI devices ○ View or upload configuration parameters from any CLI device on the network or subnet ○ Download configuration parameters to any single CLI device or any group of CLI devices on the network ○ Configuration copying / duplicating / cloning ○ Remotely change the configuration of a single CLI device ○ Registry edit <ul style="list-style-type: none"> ▪ View, upload and edit CLI device registry (configuration) • Scheduling <ul style="list-style-type: none"> ○ Tasks can be performed immediately or scheduled to be performed at a later time / date <ul style="list-style-type: none"> ▪ Flash updates, device configuration changes, etc. ○ Flexibility to schedule unattended updates to run during periods when network bandwidth utilization is low • Messaging <ul style="list-style-type: none"> ○ Send messages to individual users or groups of users • Security <ul style="list-style-type: none"> ○ Ability to set up multiple administrators, all with password protected access and permits